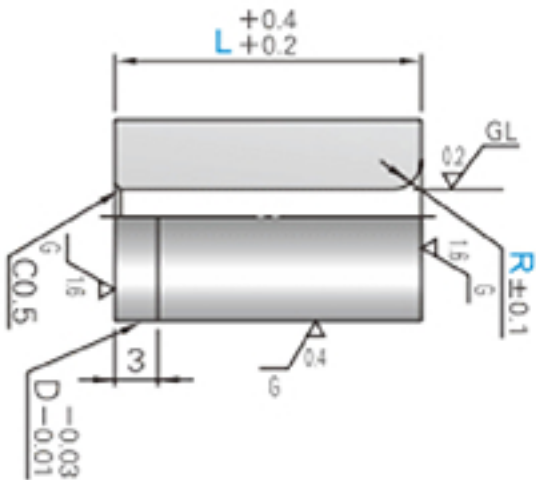
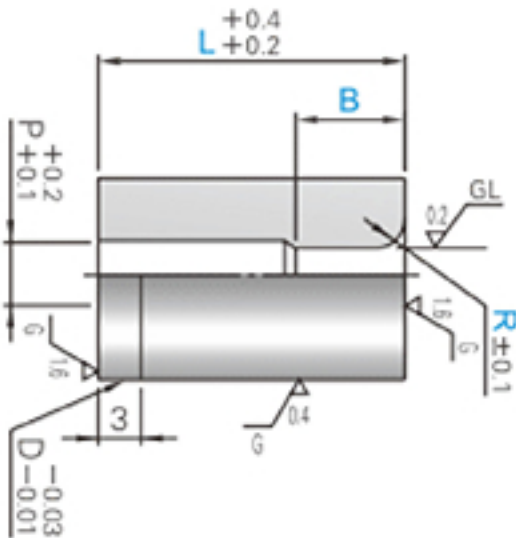


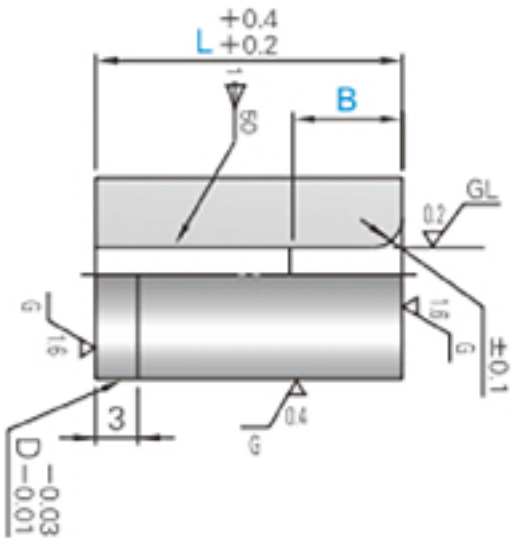
WSB2S



WSB2A



WSB2B



		Catalog No.
Type		
V40(HIP)	87~88HRA	WWSB2S WWSB2A WWSB2B

**ORDER**

Catalog No. **WWSB2B 13**

0.01mm

1mm

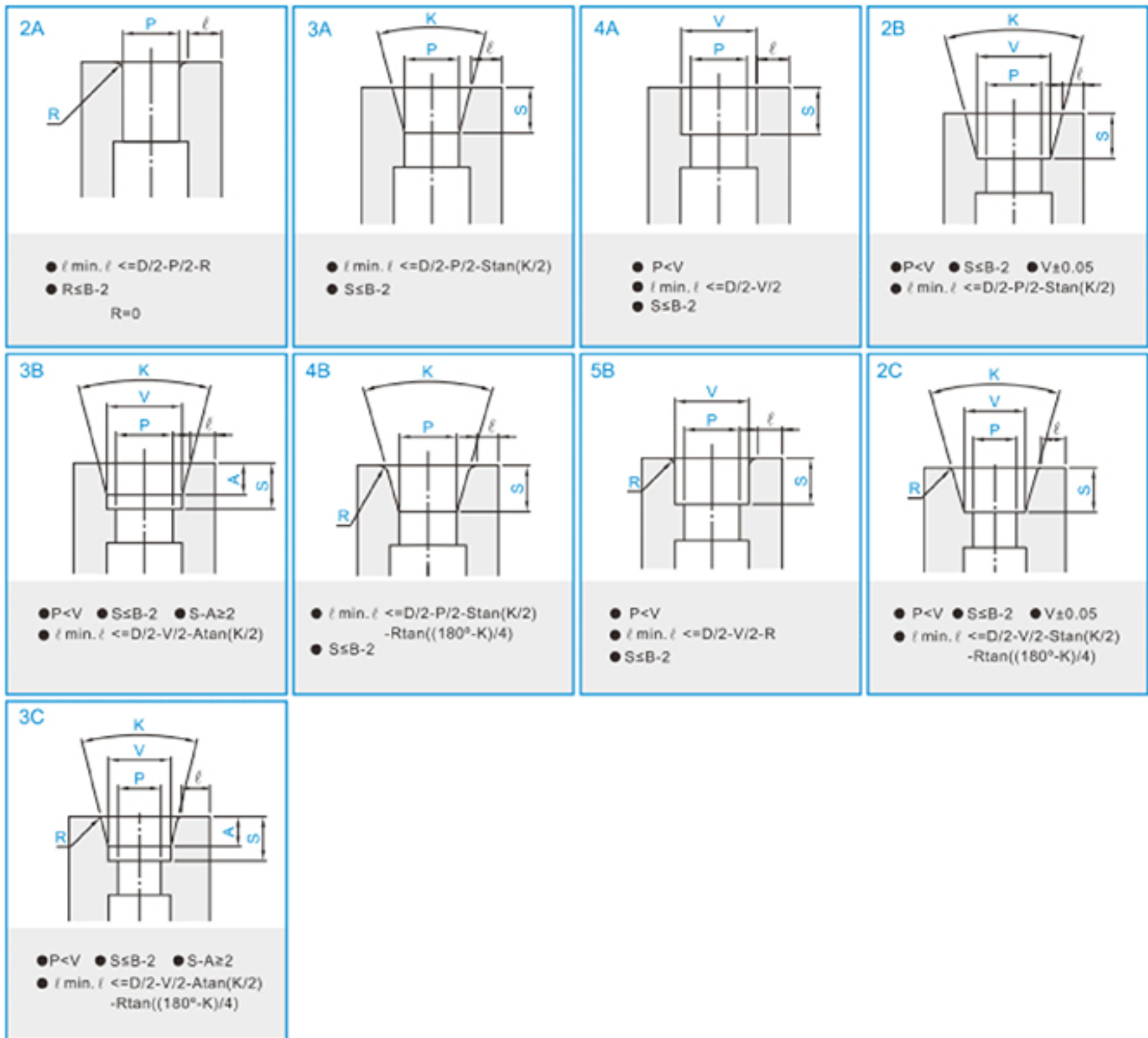
0.1mm

- L - P - B - R

- 22 - P5.50 - B8 - R1.4

Catalog No.		L	P	B	R	H
Type	D					
WWSB2S	6	16-20-22-25	2.20 ~ 3.00	—	0.2 ~ (D-P-2)/2 R=0	9
	8		2.50 ~ 4.00			11
	10		3.00 ~ 5.00			13
	13		4.00 ~ 6.50			16
	16		5.00 ~ 8.00			19
	20		8.00 ~ 10.00			23
	25		10.00 ~ 12.50			28
WWSB2A WWSB2B	6	16-20-22-25	2.20 ~ 3.00	B≤Px3 (and B≤L/2+2)	0.2 ~ (D-P-2)/2 R=0	9
	8		2.50 ~ 4.00			11
	10		3.00 ~ 5.00			13
	13		4.00 ~ 6.50			16
	16		5.00 ~ 8.00			19
	20		8.00 ~ 10.00			23
	25		10.00 ~ 12.50			28





- $R \dots 0.2 \leq R \leq 10$   $\text{T } R \pm 0.05$   
0.1mm
- $K \dots 1^\circ \leq K \leq 179^\circ$   $\text{T } K \pm 30'$   
1°
- $S \dots S \geq 2$   $\text{T } S \pm 0.1$   
0.1mm
- $A \dots 0.1\text{mm}$   $\text{T } A \pm 0.1$

- $P \dots 0.01\text{mm}$   $\text{T } P \pm 0.01$
- $V \dots 0.01\text{mm}$   $\text{T } V \pm 0.01$
- $\ell \dots \begin{matrix} \bullet \text{WHD} \bullet \text{WHDS} \bullet \text{WSD} \\ \bullet \text{WSDS} \\ \bullet \text{WKD} \bullet \text{WKDS} \end{matrix} \dots \begin{matrix} \ell \text{ min.} = 0.5 \\ \ell \text{ min.} = 1.5 \\ \ell \text{ min.} = 2.5 \end{matrix}$

